

EFFECTIVE:
27-JUN-13

SUPERSEDES:
27-MAR-13

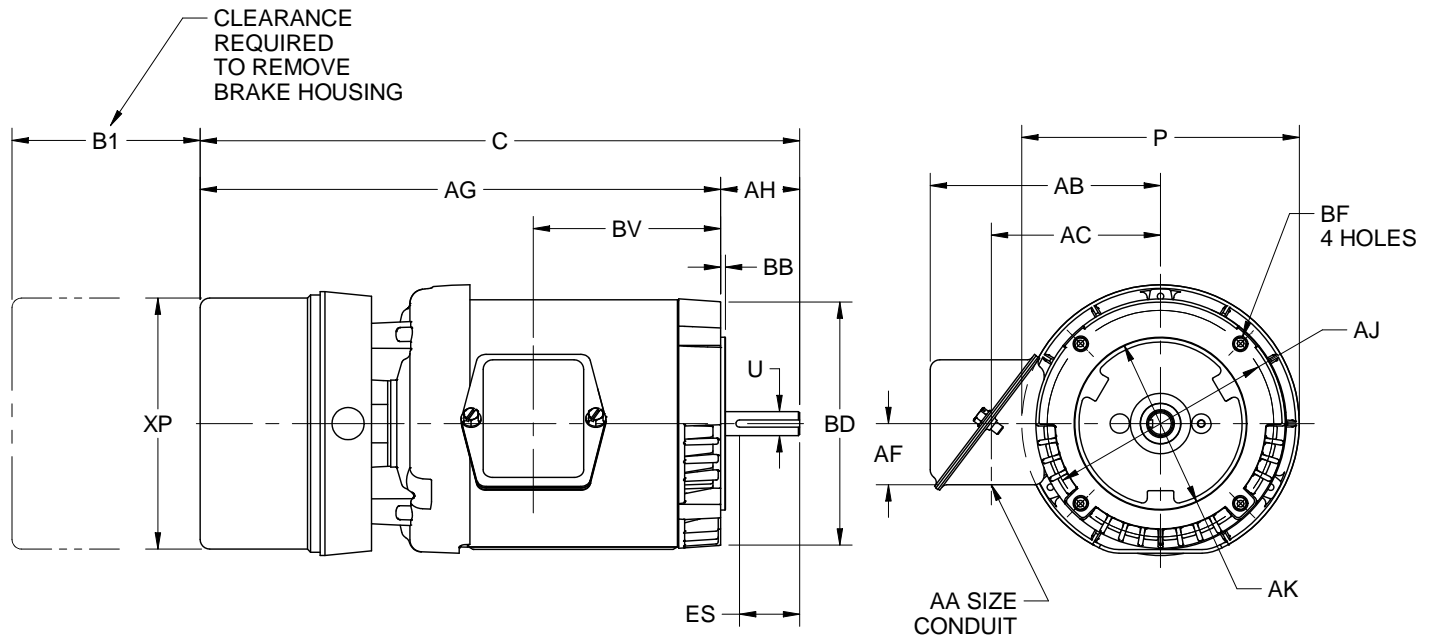
DIMENSION PRINT

TEFC - WITH STEARNS BRAKE

FRAME: 56C
BASIC TYPE: UTF

PRINT:
07-1841-04

SHEET:
1 OF 1



DIMENSIONS ARE IN INCHES AND MILLIMETERS

	C	P ²	U -.0005	AA	AB	AC	AF
IN	15.63	7.25	.6250	.75	6.00	4.41	1.59
MM	397	184	15.875		152	112	40
	AG	AH	AJ	AK -.003	BB	BD MAX	BF ³
IN	13.56	2.06	5.875	4.500	.16	6.50	3/8-16 X .75
MM	344	52	149.23	114.30	4	165	
	BV	B1	ES MIN	XP	SQ KEY		
IN	4.88	2.94	1.41	6.54	.188		
MM	124	75	36	166	4.78		

NOTE:
THIS PRINT IS GOOD FOR MOTORS WITH STEARNS BRAKE 56,3XX SERIES, (NEMA 1) ENCLOSURE RANGING FROM 1.5 THRU 15 LB. FT.

1. DIMENSIONS MAY VARY .25" DUE TO CASTING AND/OR FABRICATION VARIATIONS.
2. LARGEST MOTOR WIDTH.
3. TAP SIZE AND BOLT PENETRATION ALLOWANCE.
4. ALL TAPPED HOLES ARE UNIFIED NATIONAL COARSE, RIGHT HAND THREAD.
5. CONDUIT BOX MAY BE LOCATED ON EITHER SIDE OF MOTOR. CONDUIT OPENING MAY BE LOCATED IN STEPS OF 180° REGARDLESS OF LOCATION. STANDARD AS SHOWN WITH CONDUIT OPENING DOWN.
6. TOLERANCES ARE IN INCHES.
7. FRAME REFERENCE: 5.500/56

TOLERANCES	
FACE RUNOUT	.004 T.I.R.
PERMISSIBLE ECCENTRICITY OF MOUNTING RABBET	.004 T.I.R.
PERMISSIBLE SHAFT RUNOUT	.002 T.I.R.

07-1841/B

Nidec Motor Corporation
St. Louis, Missouri

INFORMATION DISCLOSED ON THIS DOCUMENT IS CONSIDERED PROPRIETARY AND SHALL NOT BE REPRODUCED OR DISCLOSED WITHOUT WRITTEN CONSENT OF NIDEC MOTOR CORPORATION



ISSUED BY K. FRIEDMAN
APPROVED BY J. O'BRIEN

IHP_DP_NMCA (MAR-2011) SOLIDEDGE